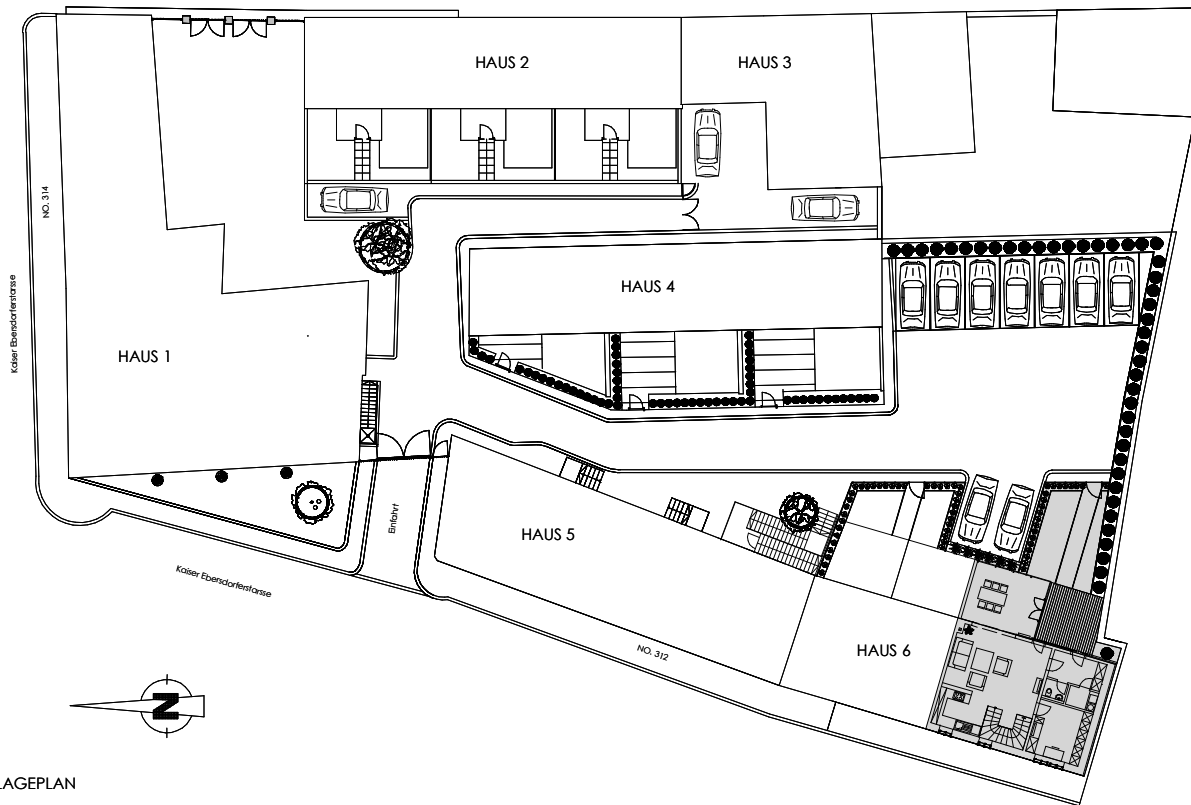


Kaiser Ebersdorferstrasse 312
1110 Wien

Haus 6 Top 7



LAGEPLAN

TOP 7 (146,50m² exkl. Garten
und Terrasse)

EG: 85m²

OG: 61,50m²

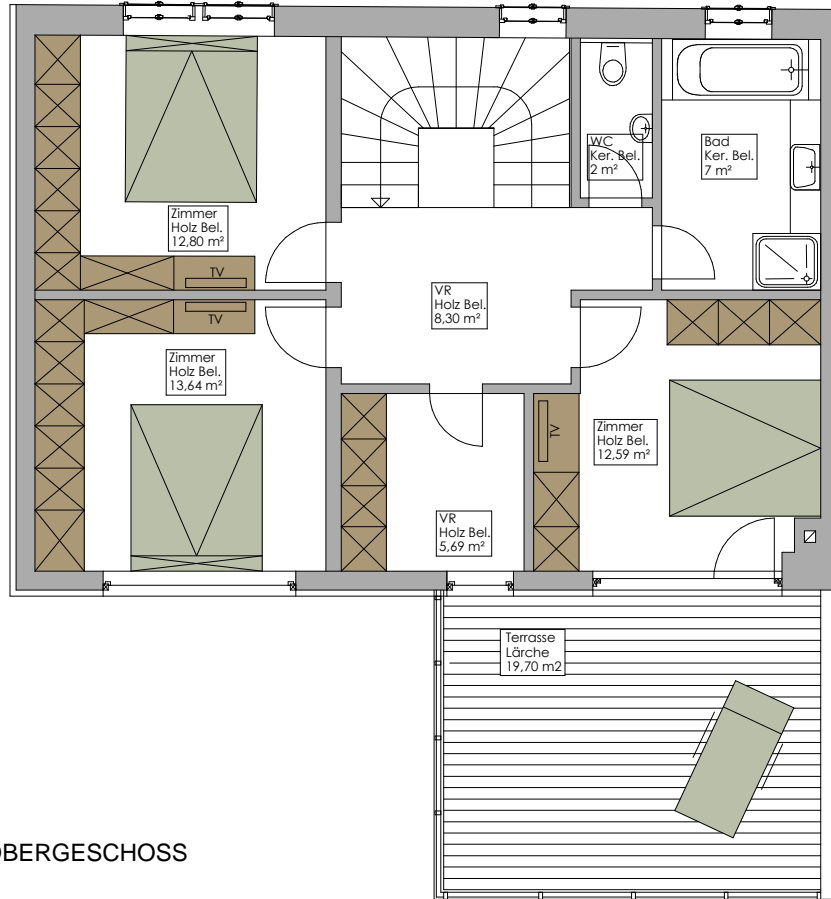
Garten/Terrasse: 43,75m²

Terrasse: 19,70m²

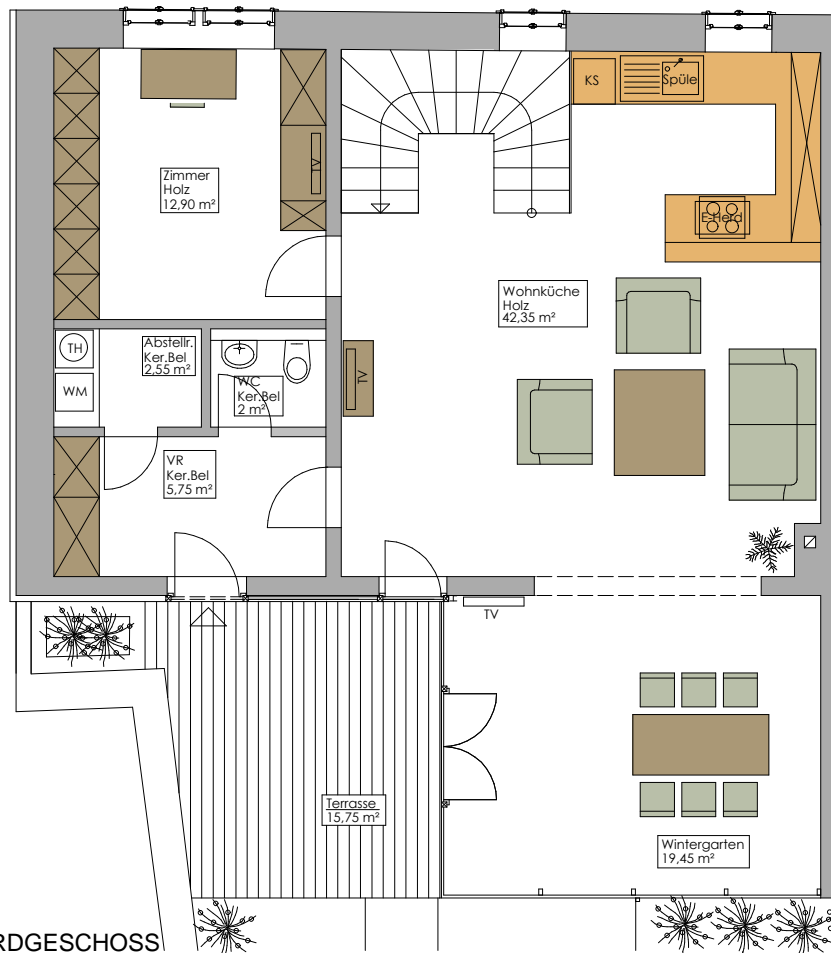
PKW-Stellplatz: 1

Kaiser Ebersdorferstrasse 312

1110 Wien



OBERGESCHOSS



ERDGESCHOSS