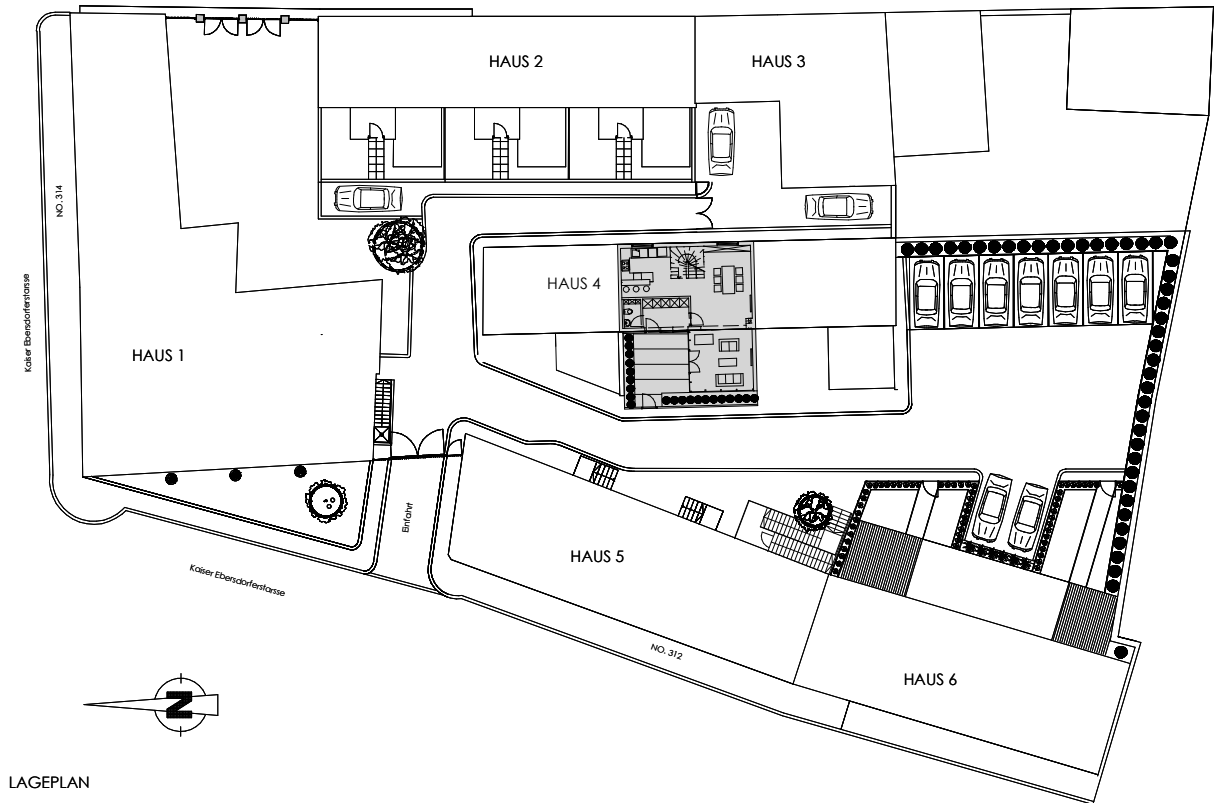
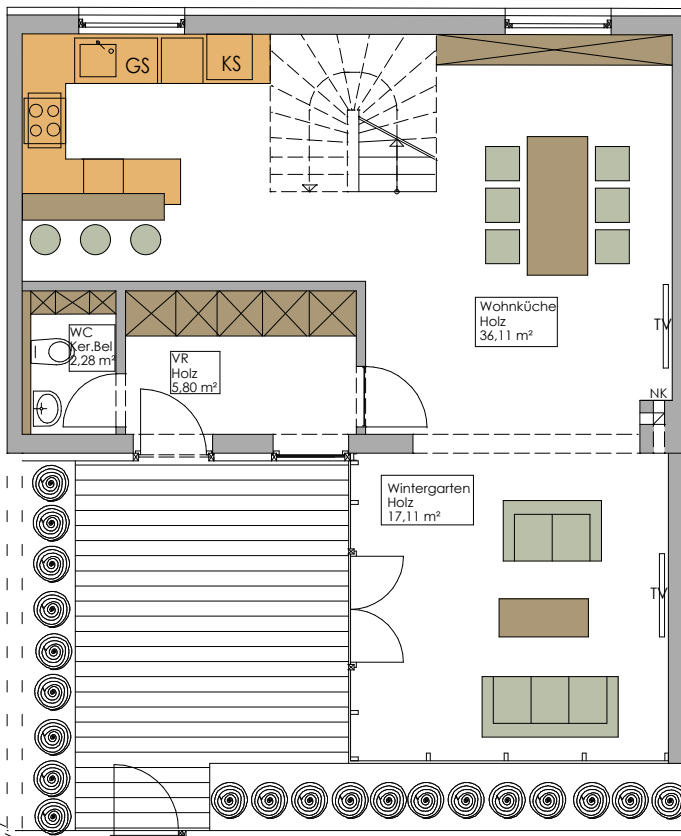


Kaiser Ebersdorferstrasse 312
1110 Wien

Haus 4 Top 10



LAGEPLAN

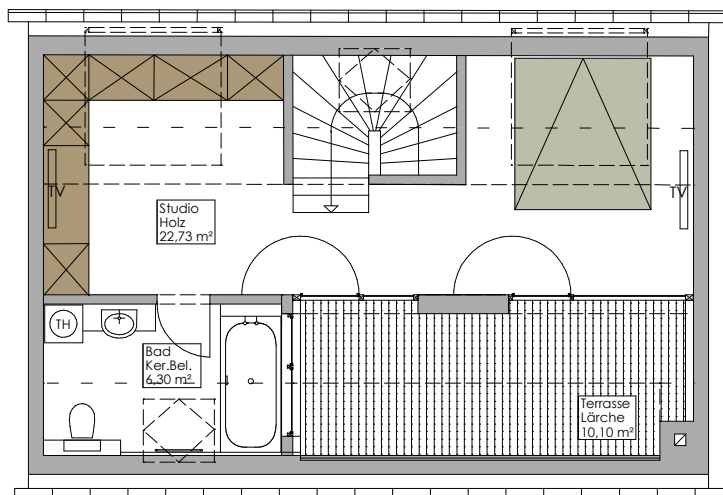


TOP 10 (129,47 m² exkl. Garten und Terrasse)

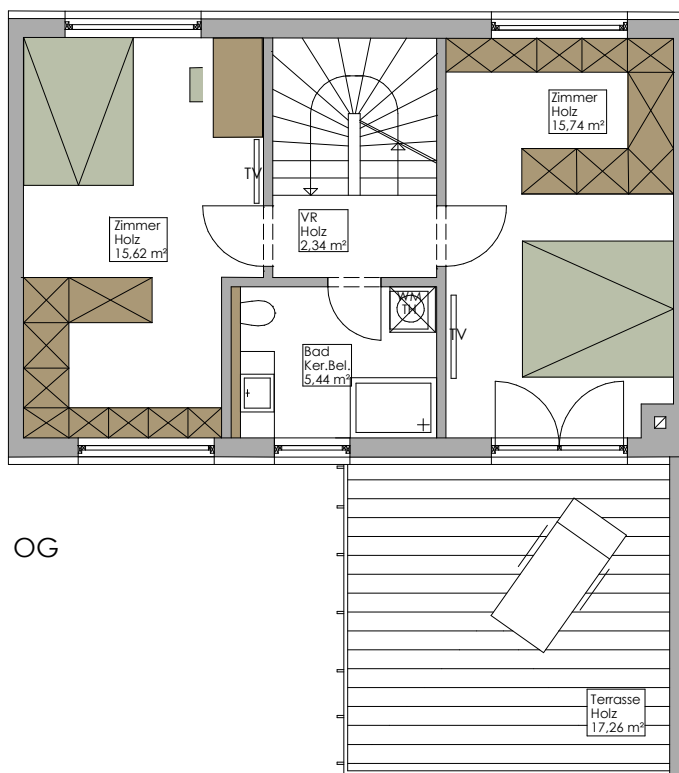
EG: 61,30m²
OG: 39,14m²
DG: 29,03m²
Garten/Terrasse: 25m²
Terrasse: 27,26m²

EG

Kaiser Ebersdorferstrasse 312
1110 Wien



DG



OG