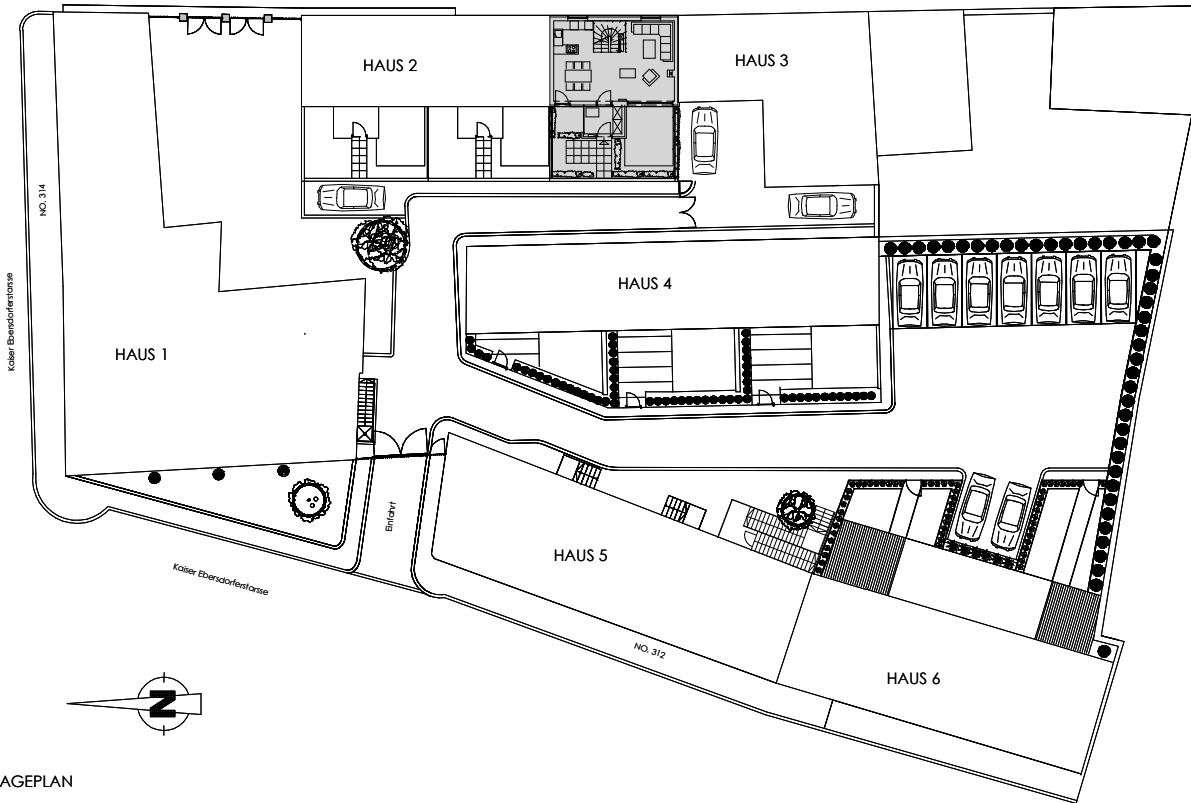


Kaiser Ebersdorferstrasse 314
1110 Wien

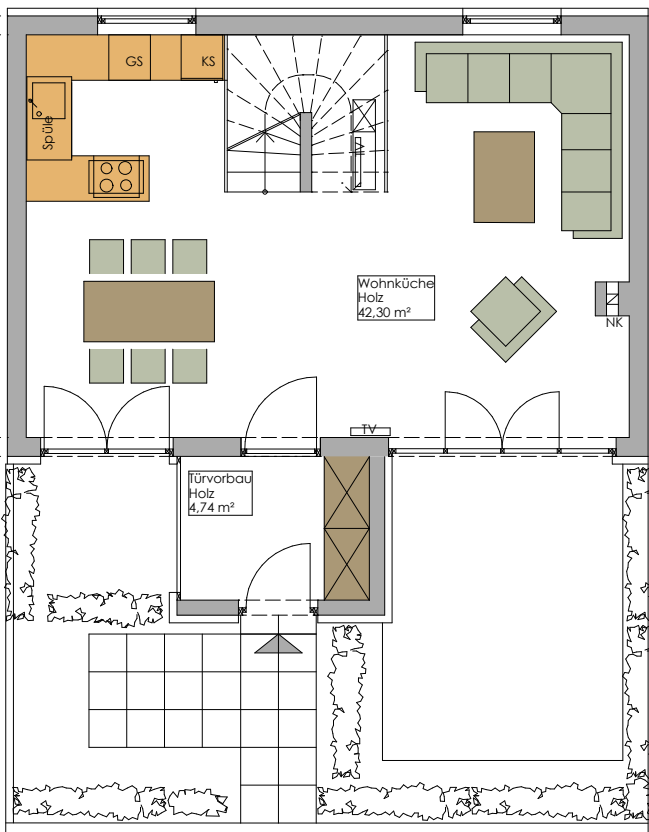
Haus 2 Top 17



LAGEPLAN

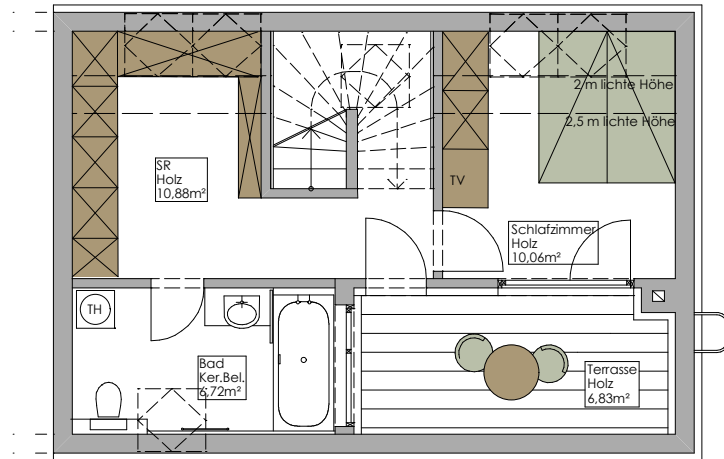
TOP 17 (110,51 m² exkl. Garten und Terrasse)

EG: 47,04m²
OG: 35,81m²
DG: 27,66m²
Garten/Terrasse: 32,80m²
Terrasse: 6,83m²

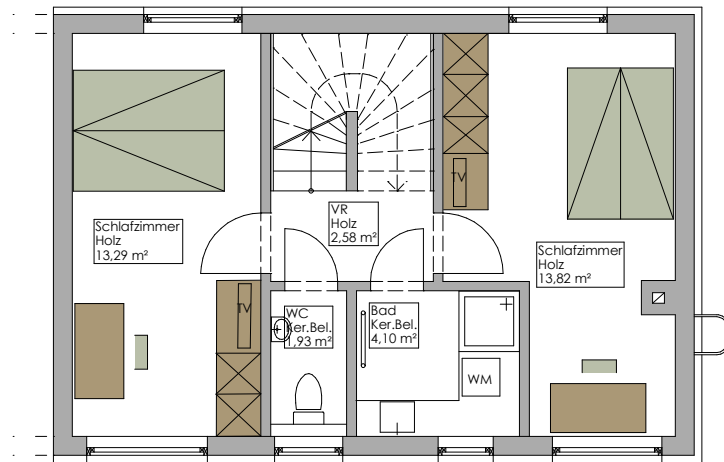


ERDGESCHOSS

Kaiser Ebersdorferstrasse 314
1110 Wien



DACHGESCHOSS



OBERGESCHOSS